

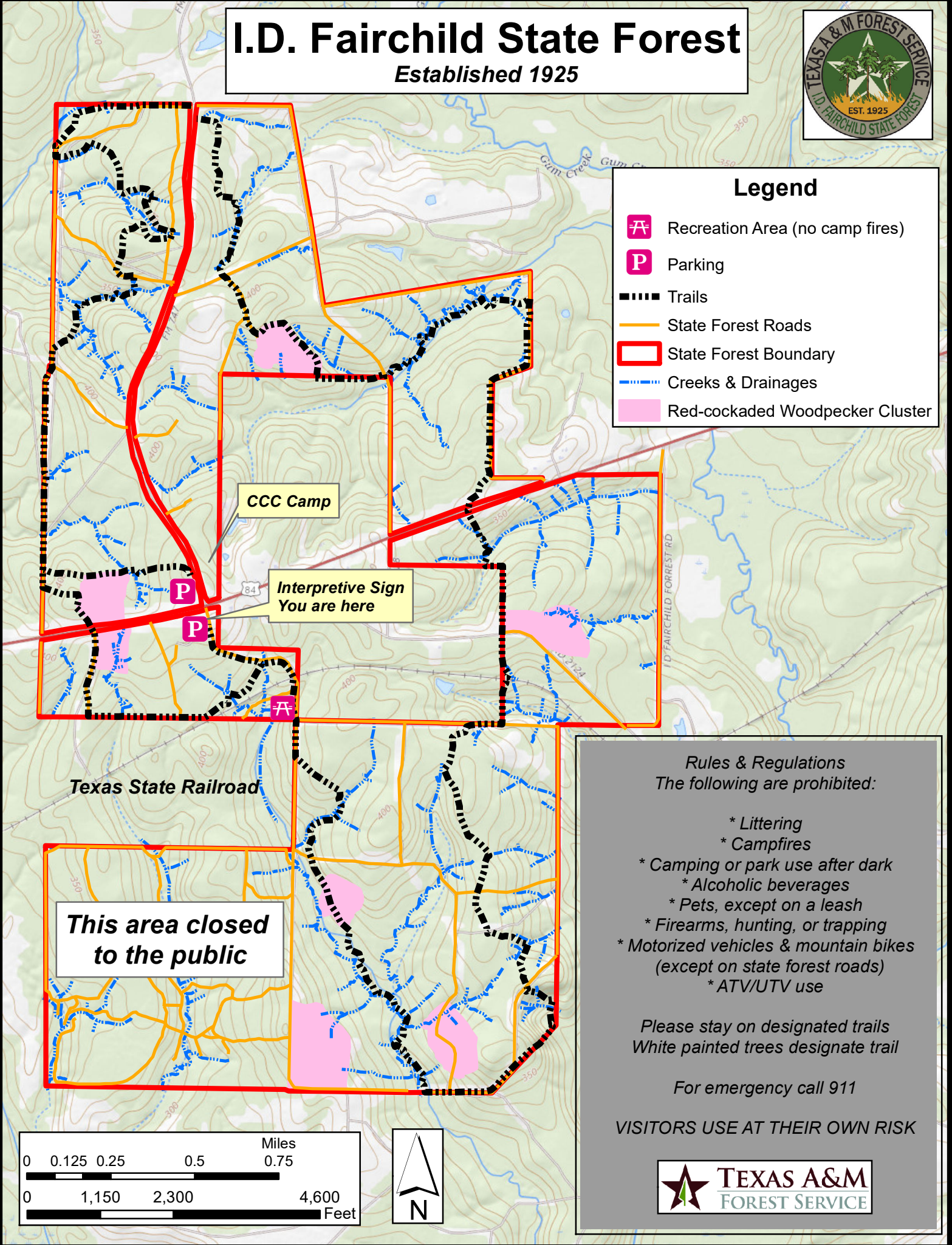
I.D. Fairchild State Forest

Established 1925



Legend

- Recreation Area (no camp fires)
- Parking
- Trails
- State Forest Roads
- State Forest Boundary
- Creeks & Drainages
- Red-cockaded Woodpecker Cluster



CCC Camp

Interpretive Sign
You are here

Texas State Railroad

**This area closed
to the public**

Rules & Regulations
The following are prohibited:

- * Littering
- * Campfires
- * Camping or park use after dark
- * Alcoholic beverages
- * Pets, except on a leash
- * Firearms, hunting, or trapping
- * Motorized vehicles & mountain bikes (except on state forest roads)
- * ATV/UTV use

Please stay on designated trails
White painted trees designate trail

For emergency call 911

VISITORS USE AT THEIR OWN RISK

